

PediLoc[®]

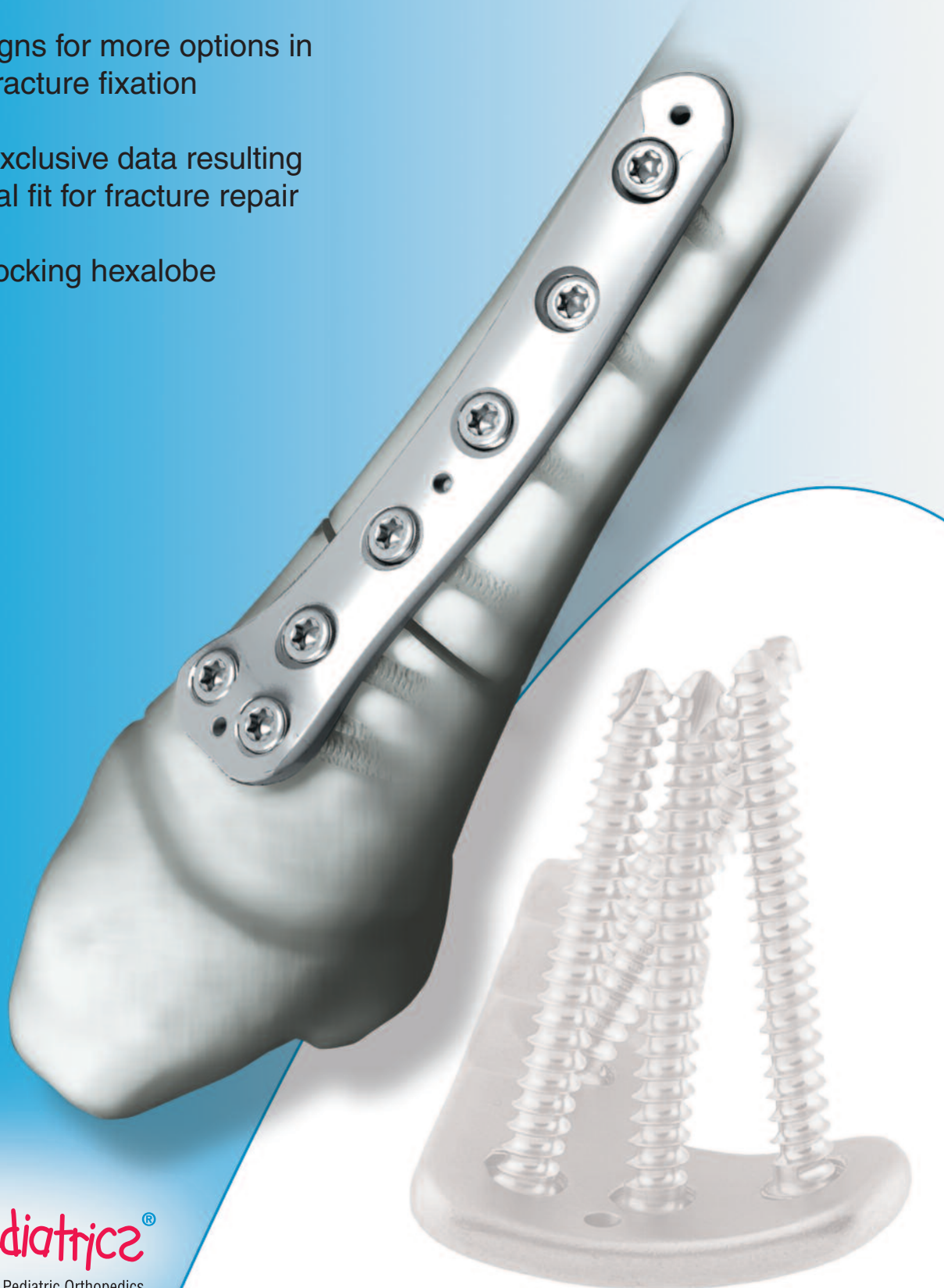
Distal Tibial Locked Plating System

A new benchmark in Tibial Fixation.

Multiple plate designs for more options in osteotomies and fracture fixation

Engineered from exclusive data resulting in better anatomical fit for fracture repair

Locking and non-locking hexalobe drive screws



Features and Benefits

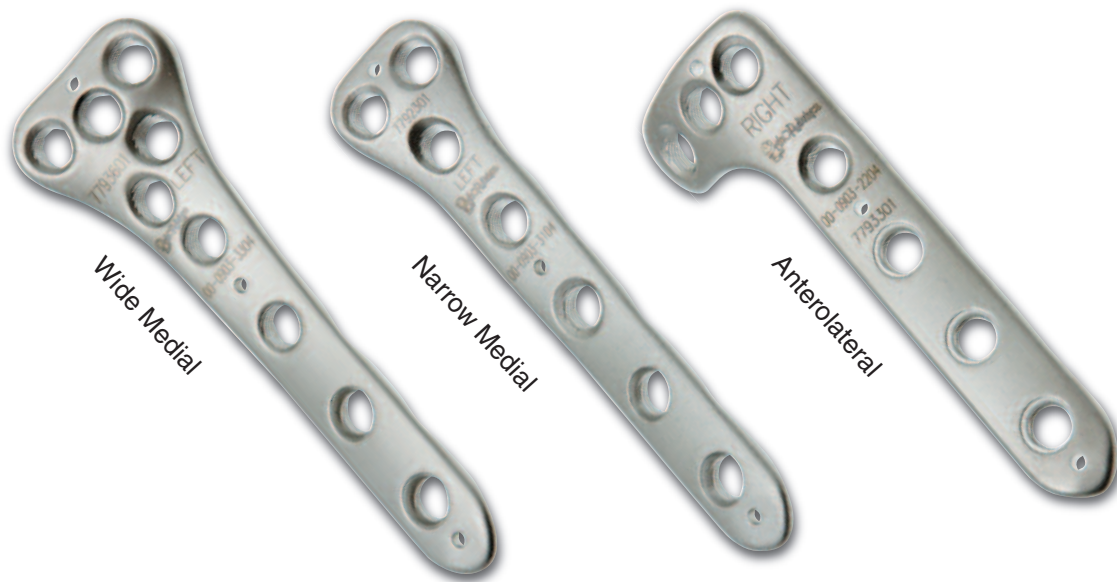
- Stainless steel low profile locking plates
- Strong, easy to remove
- Anatomically precontoured
- Wide variety of shapes and sizes
- Part of the PediLoc System
- Designed for use in osteotomies and fracture fixation
- Mechanically stable
- Reduced skin irritation
- Rigid fixation

PediLoc® Tibia

3 Plate Configurations:

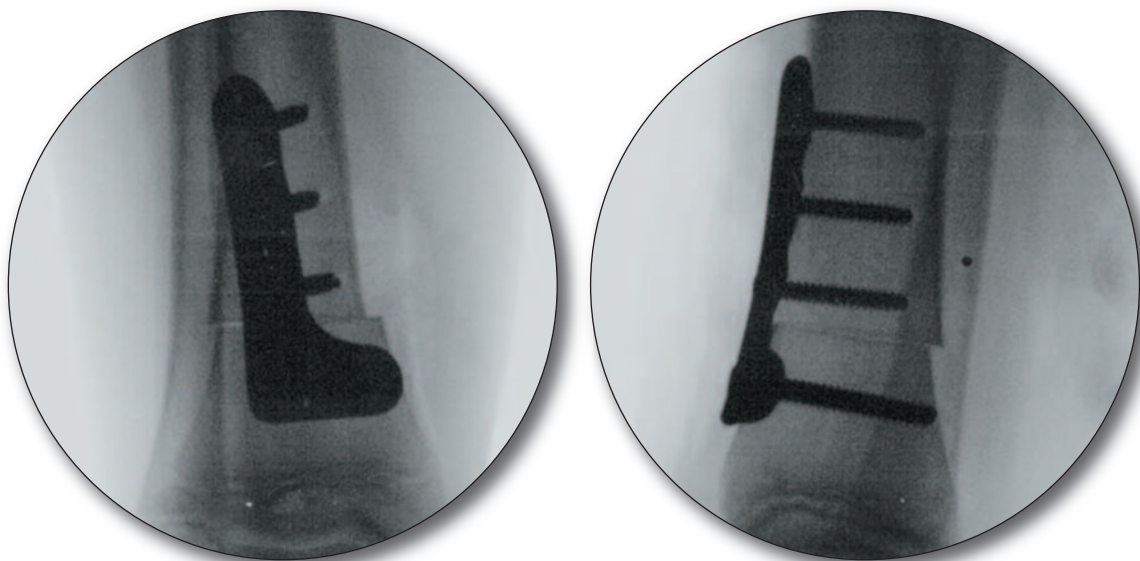
Metaphyseal flare allows more stable fixation distal to the osteotomy or fracture site.

Accepts low profile 3.5mm locking & non-locking cortical screws.



All screws compatible with a T15 – 3.5 Hexalobe Driver.

Each plate is specifically designed for anatomic fit to the pediatric tibia.



OrthoPediatrics, Children Are Not Just Small Adults, PediPlates, PediLoc, PediFlex, PLEO, PediNail, Scwire, and the Pedi logo are trademarks of OrthoPediatrics Corp.

OrthoPediatrics, Children Are Not Just Small Adults, PediPlates, PediLoc, Scwire and the Pedi logo are registered trademarks in the United States. The Pedi logo is a registered trademark in Australia and a registered Community Trade Mark.

